



TAI-SAW TECHNOLOGY CO., LTD.

No. 3, Industrial 2nd Rd., Ping-Chen Industrial District,
Taoyuan, 324, Taiwan, R.O.C.

Product Specifications Approval Sheet

Product Name: 733/760 MHz SAW Band-Stop Filter SMD 3.0×3.0mm

TST Parts No.: TE0134A (This part is compliant with AEC-Q200)

Customer Parts No.: _____

Customer signature required
Company: _____
Division: _____
Approved by : _____
Date: _____

Checked by: _____ Sam Lin *Sam Lin*

Approval by: _____ Andy Yu *Andy Yu*

Date: _____ 2018/09/18

1. Customer signed back is required before TST can proceed with sample build and receive orders.
2. Orders received without customer signed back will be regarded as agreement on the specifications.
3. Any specifications changes must be approved upon by both parties and a new revision of specifications shall be released to reflect the changes



TAI-SAW TECHNOLOGY CO., LTD.

No. 3, Industrial 2nd Rd., Ping-Chen Industrial District,
Taoyuan, 324, Taiwan, R.O.C.

Band Stop Filter 733/760 MHz SMD 3.0x3.0mm

MODEL NO.: TE0134A

Rev.:1.0

A. MAXIMUM RATING:

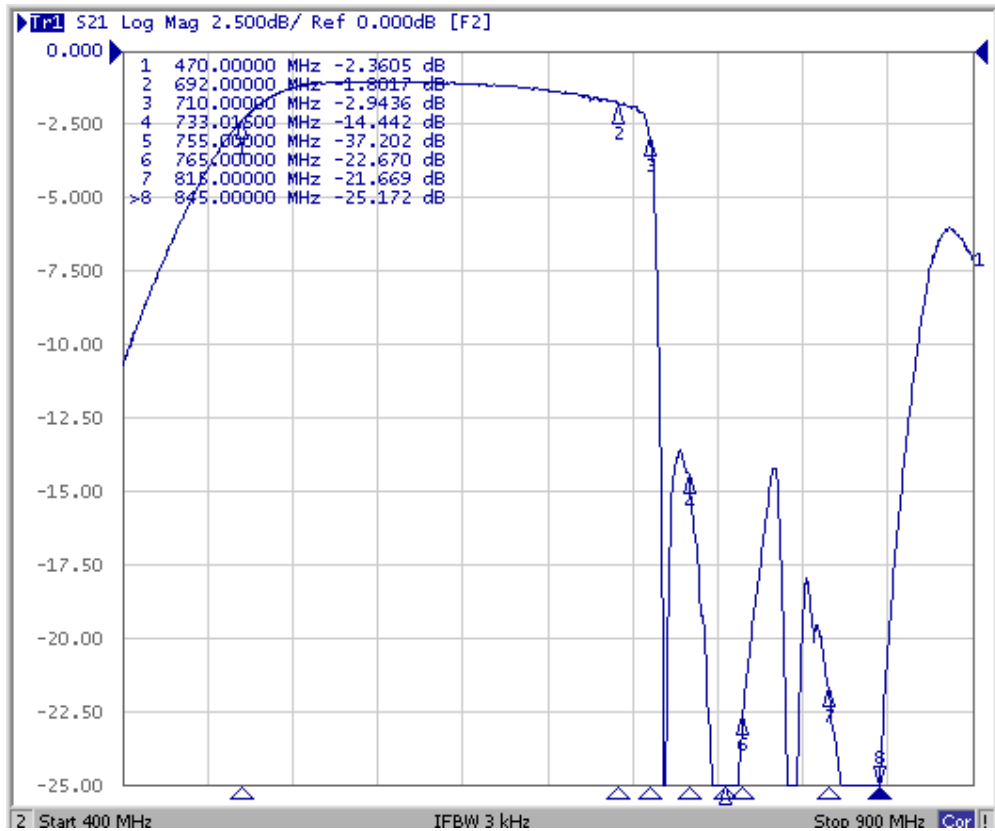
1. Input Power Level: 15 dB_m
2. DC voltage: 5 V
3. Operating Temperature: -40°C to +105°C
4. Storage Temperature: -40°C to +105°C
5. Moisture Sensitivity Level: Level 1 (MSL1)

B. CHARACTERISTICS:

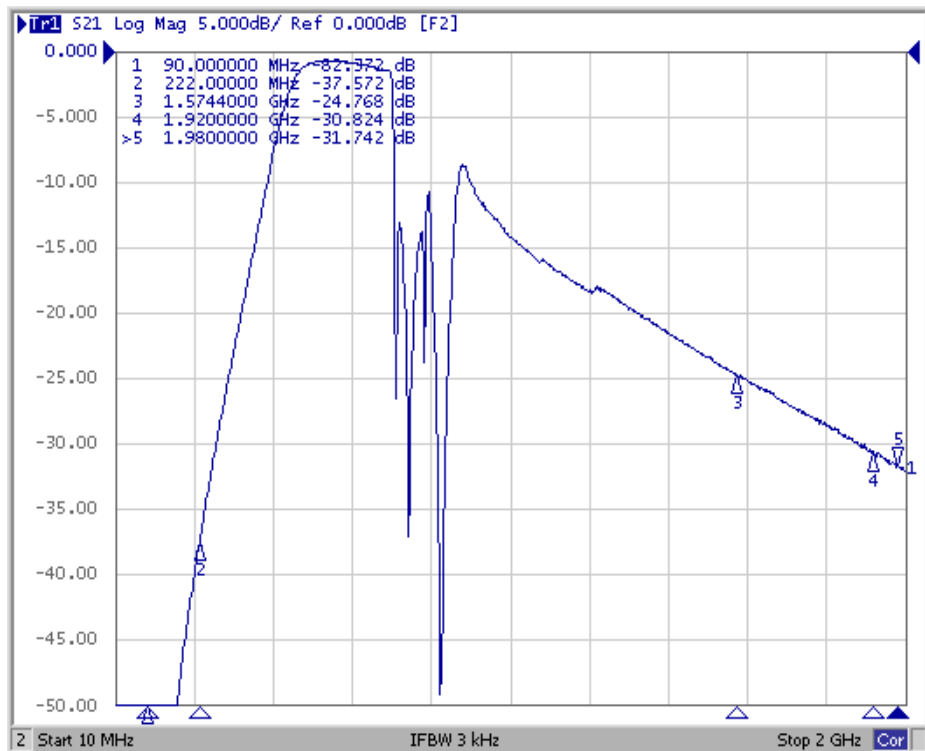
Item	Unit	Min.	Typ.	Max.
Center frequency	MHz	-	733 760	-
Minimum Insertion Loss (470 ~ 710 MHz)	dB	-	0.8	2.0
Maximum Insertion Loss				
470 ~ 692 MHz	dB	-	1.8	3.0
692 ~ 710 MHz	dB	-	2.9	6.5
Attenuation (reference from 0dB)				
90 ~ 222 MHz	dB	30	38	-
718 ~ 748 MHz	dB	10	14	-
755 ~ 765 MHz	dB	14	23	-
815 ~ 845 MHz	dB	15	22	-
1574.4 ~ 1576.44 MHz	dB	16	25	-
1920 ~ 1980 MHz	dB	22	31	-
Source impedance Z_s	Ω	-	50	-
Load impedance Z_L	Ω	-	50	-

C. Transfer Function :

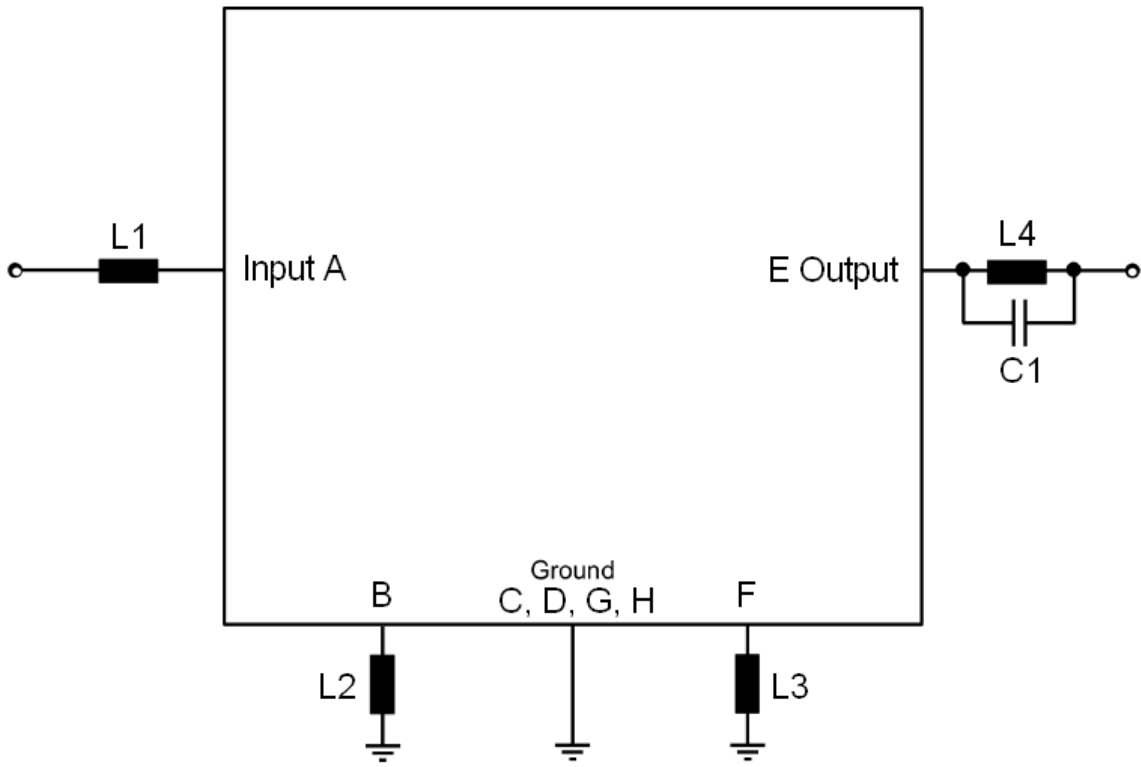
Stop Band



Wide Band

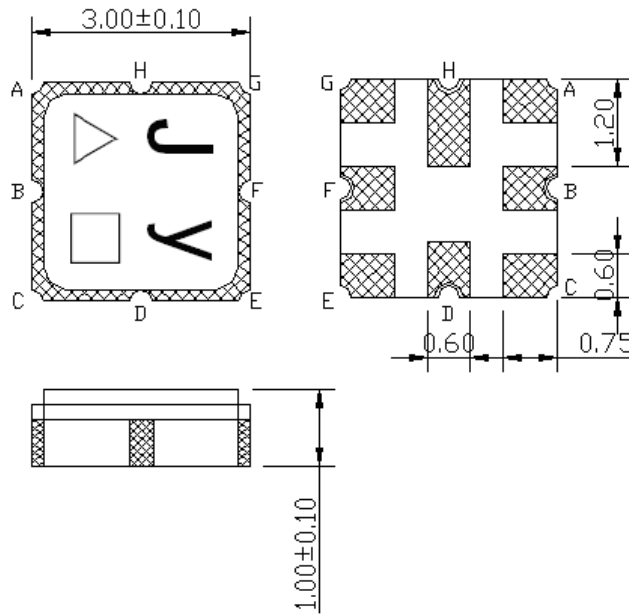


D. MEASUREMENT CIRCUIT:



L1 = 11nH, L2 = 11nH, L3 = 6.8nH, L4 = 3.6nH
C1 = 10pF

E. OUTLINE DRAWING:

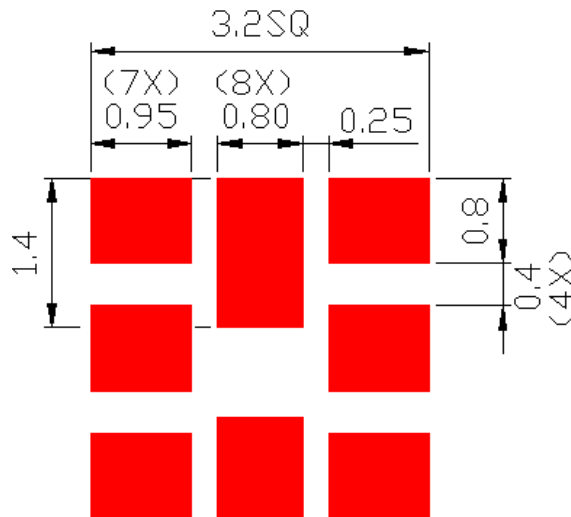


△ : Year Code (2009->9, 2010->0, ..., 2018->8)

□ : Date Code (Follow the table from planner each year)

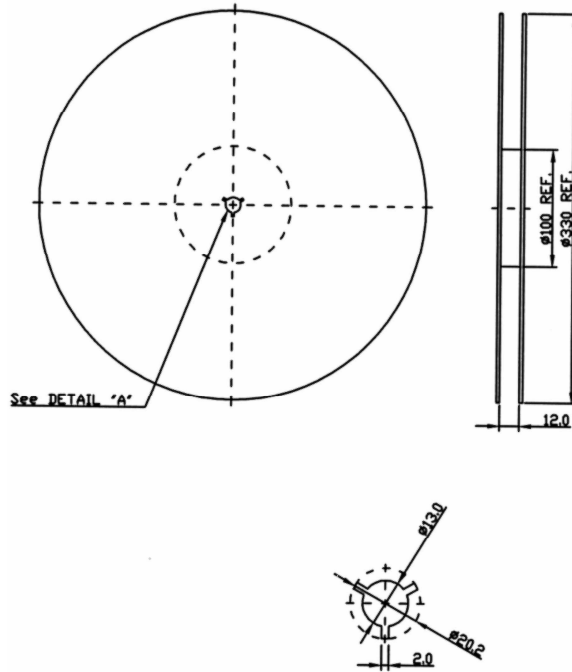
WK01	WK02	WK03	WK04	WK05	WK06	WK07	WK08	WK09	WK10	WK11	WK12	WK13
A	B	C	D	E	F	G	H	I	J	K	L	M
WK14	WK15	WK16	WK17	WK18	WK19	WK20	WK21	WK22	WK23	WK24	WK25	WK26
N	O	P	Q	R	S	T	U	V	W	X	Y	Z
WK27	WK28	WK29	WK30	WK31	WK32	WK33	WK34	WK35	WK36	WK37	WK38	WK39
a	b	c	d	e	f	g	h	i	j	k	l	m
WK40	WK41	WK42	WK43	WK44	WK45	WK46	WK47	WK48	WK49	WK50	WK51	WK52
n	o	p	q	r	s	t	u	v	w	x	y	z

F. PCB FOOTPRINT:

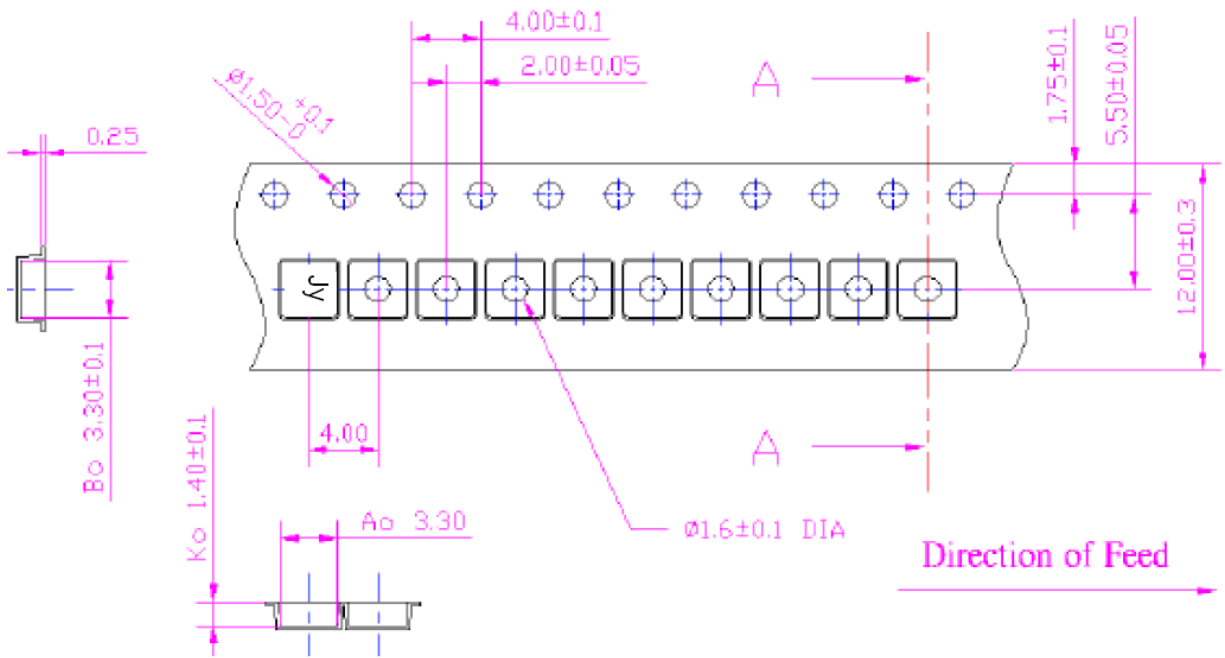


G. PACKING:

1. REEL DIMENSION



2. TAPE DIMENSION



H. RECOMMENDED REFLOW PROFILE :

1. Preheating shall be fixed at 150~180°C for 60~90 seconds.
2. Ascending time to preheating temperature 150°C shall be 30 seconds min.
3. Heating shall be fixed at 220°C for 50~80 seconds and at 260°C +0/-5°C peak (20~40sec).
4. Time: 2 times.

